



PROFIL D'IMMEUBLE - BUILDING PROFILE

>> ESPACES À LOUER - SPACE FOR LEASE

Superficie du terrain /
Land area
30 115 pi²/sq ft

Édifice A /
Building A
6 570 pi²/sq ft

Édifice B /
Building B
3 510 pi²/sq ft

>> CARACTÉRISTIQUES DE L'IMMEUBLE - BUILDING FEATURES

Type d'immeuble - Building type:

Industriel / Industrial

Année de construction - Year built:

1966

Hauteur libre - Clear Height:

Building A : 15'
Building B : 18'

Portes de chargement - Shipping doors:

Building A : 2 portes niveau sol /drive-in doors
Building B : 1 portes niveau sol /drive-in doors

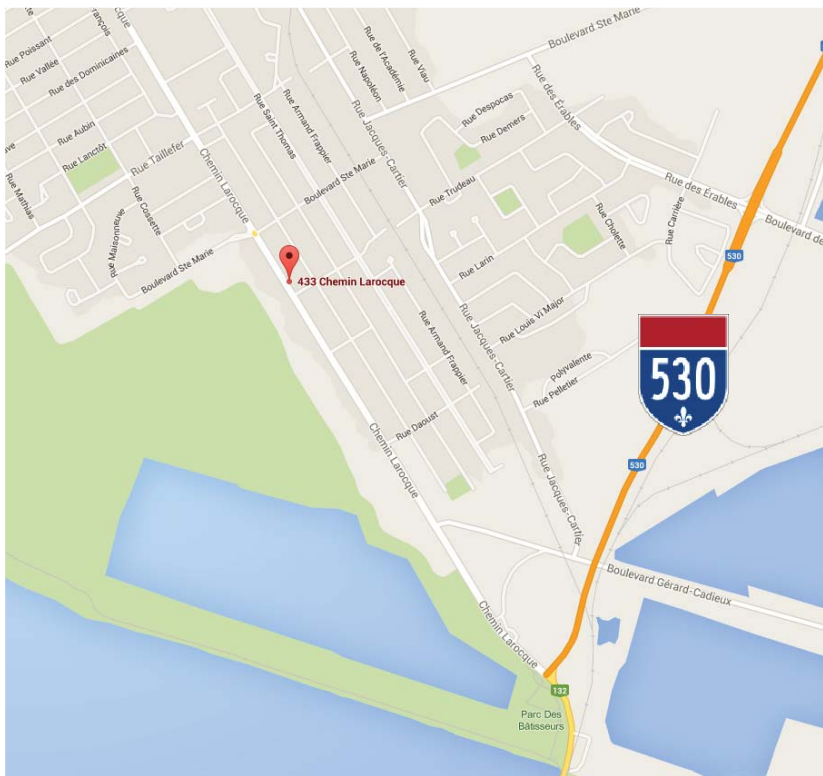


SERVICES CONSEILS LANDMARK
LANDMARK ADVISORY SERVICES
Agence immobilière | Real Estate Agency

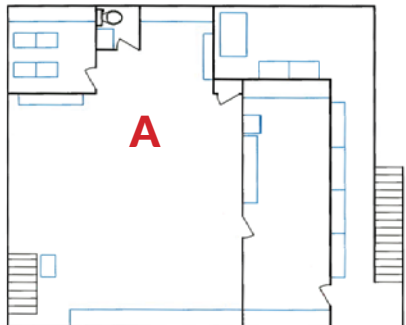
1.866.845.9113

À LOUER
FOR LEASE

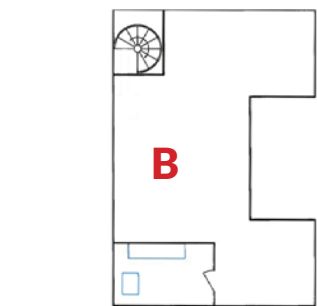
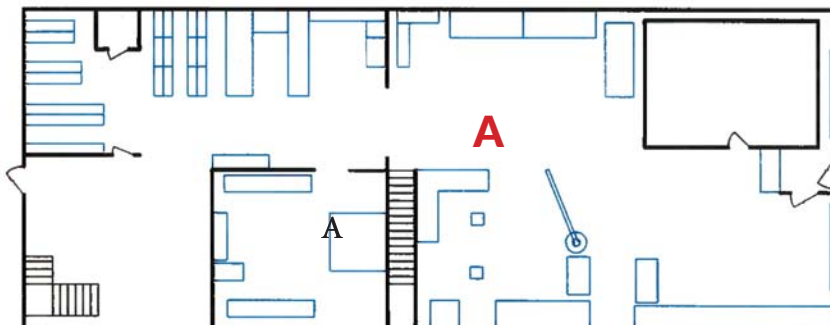
433 chemin Larocque, Valleyfield (QC)



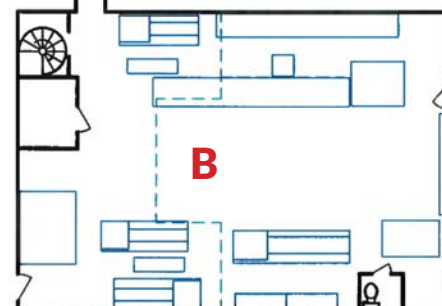
2^e étage, édifice A / 2nd floor, building A



1^{er} étage, édifice A / 1st floor, building A



2^e étage, édifice B / 2nd floor, building B



1^{er} étage, édifice B / 1st floor, building B



SERVICES CONSEILS LANDMARK

Solutions immobilières globales – Agence immobilière

4915, rue Paré, Montréal (Québec) H4P 1P4
www.lasglobal.com

1.866.845.9113